



# AUSTIN GENEALOGICAL SOCIETY QUARTERLY

---

Volume 52, Number 3/4

Winter 2011

---

## Contents

AGS 2012 Calendar of Events .....	53
Austin History Center, Travis County Records Holdings .....	54
An Adulteress and Fallout of a Civil War Enlistment.....	63
Miscellaneous Texas Obituaries .....	70
Matilda Charlotta Andersdotter Sjoberg Sponberg, My Mormormor .....	77
WILLIAM GEORGE ROUNTREE.....	80
REUBEN and SARAH MORRISON HORNSBY .....	81
RICHARD STRÖMBERG and ADELINA GÖK .....	82
MAHALA MURCHISON.....	83
Addison LANE .....	84
WILLIAM and MARY NEELY ATWOOD.....	85



# AGS 2012 Calendar of Events

---

**28 February, 7pm**

AGS Monthly Meeting, Highland Park Baptist Church, 5206 Balcones Drive  
“Get Your Lineage in Line” with Sylvia Nimmo

**27 March, 7pm**

AGS Monthly Meeting, Highland Park Baptist Church, 5206 Balcones Drive  
“How Do I Organize All of This Stuff,” AGS Panel Discussion

**24 April, 7pm**

AGS Monthly Meeting, Highland Park Baptist Church, 5206 Balcones Drive  
“Researching the 1940 Census,” with Randy Whited

**22 May, 7pm**

AGS Monthly Meeting, Highland Park Baptist Church, 5206 Balcones Drive  
“I Bet You Didn't Know That...,” AGS Panel Discussion

**26 June, 7pm**

AGS Monthly Meeting, Highland Park Baptist Church, 5206 Balcones Drive  
“Getting the Most from FamilySearch.org” with Karen Matheson

**24 July, 7pm**

AGS Monthly Meeting, Highland Park Baptist Church, 5206 Balcones Drive  
“Preserving Paper & Photos” with Claudia Anderson

**28 August, 7pm**

AGS Monthly Meeting, Highland Park Baptist Church, 5206 Balcones Drive  
“Trailing the Old West History” with Mike Cox

**25 September, 7pm**

AGS Monthly Meeting, Highland Park Baptist Church, 5206 Balcones Drive  
“Social History of the Confederate States” with Jackie Jones

**23 October, 7pm**

AGS Monthly Meeting, Highland Park Baptist Church, 5206 Balcones Drive  
“Who Do You Think You Are: Austin”

**27 November, 7pm**

AGS Monthly Meeting, Highland Park Baptist Church, 5206 Balcones Drive  
“Fall Festival; Austin's Sixth Street” with Allen Childs, M.D.

# Austin History Center, Travis County Records Holdings

---

## Travis County Tax Roll

Row 3E, 3F, 3G

Individual volumes include:

1879	1910	1923
1887	1911 (2 vol)	1924
1900	1912	1925
1901	1913	1926
1902	1914 (2 vol)	1927
1903 (2 vol)	1915	1928
1904	1916	1929
1905 (2 vol)	1917 (2 vol)	1930
1906 (2 vol)	1918	1931
1907 (2 vol)	1919	1932
1908 (2 vol)	1921	1933
1909	1922	

Also 1861 and 1866-67

## Travis County Supplemental Tax Roll

Row 3E

Individual volumes include:

1896	1902	1910
1898	1904	1912
1901	1909	

## Travis County City Lot Register

All North Walls

Individual volumes include:

- 1879 (prior to)
- 1879-80

1881-1912 ( one vol. per year)

1913 -1974 (two vols. per year; 12 vols. 1974)

**Travis County Voter Registration List**

**Row 2D**

Includes volumes for:

1867

1873

1892

1920-1973 (this volume just lists the number of voters in each precinct)

**Travis County Assessor's Land Register**

**Row 2G**

Includes volumes for:

1877

1883

1888

1879-1880

1884

1889

1880

1885

1890

1881

1886

1882

1887

**Travis County Land Register**

**Row 2G**

Includes volumes for:

1896-1900

1916-1918

1928-1930

1900-1905

1919-1921

1931-1933

1906-1910

1922-1924

1934-1936

1911-1915

1925-1927

**Travis County Transfers**

**Row 2D**

Includes volumes for:

1916

1917

**Travis County Record of Application Tubercular Cases**

Row 2D

Includes volume for: 1925-1932

**Travis County Tubercular Record**

Row 2D

Includes volume for: 1932-35

**Travis County Marks and Brands Record**

Row 2D

Includes 3 volumes:

1840-1893

1882-1902

1902-1943

**Travis County Convict Labor Record**

Row 2D

Includes 2 volumes for: (by convict, who hired, pay rate)

1897-1905

1915-1917

**Travis County Chattel Mortgage Register**

Row 2D-F

Includes volumes for:

vol. 184 1897-1898

vol. 351 1923

vol. F 1926

vol. O 1929

vol. X 1932

vol. 55 1946

vol. 64 1950

vol. 72 1953

vol. 73 1953

vol. 74 1953

vol. 75 1953-1954

vol. 76 1954

vol. 77 1954

vol. 78 1954

**Travis County Reverse Index to Chattel Mortgages**

**Row 2F-G**

Includes volume for:

1934 1941

1936 1948

1939

**Travis County Direct Index to Chattel Mortgages**

**Row 2F**

Includes volumes for:

1930

1934

1936

**Travis County General Index to Chattel Mortgages**

**Row 2F**

Includes volumes for: 1926

**Travis County Inquest Case Papers J. P. Precinct 3/5**

**Row 2A**

Includes 5 document boxes: 1973-1977

**Travis County Inquest Case Papers J. P. Precinct 6/4**

**Row 2A**

Includes 3 document boxes: 1967-1976

**Travis County Inquest Docket J. P. Precinct 1**

**Row 2B**

Includes 3 volumes for:

1974-1976

1976-1977

1977

**Travis County Inquest Docket J. P. Precinct 2**

**Row 2B**

Includes 4 volumes for:

1974-1975

1975-1976

1976-1977

1977

**Travis County Inquest Docket J. P. Precinct 3 Place 1**

**Row 2B**

Includes 18 volumes for:

1911-1933

1947-1948

1933-1935

1949-1950

1935-1936

1950-1951

1936-1937

1951-1954

1937-1938

1954-1955

1938-1940

1956-1959

1940-1943

1960-1963

1943-1946

1963

1946-1947

1964-1965

**Travis County Inquest Docket J. P. Precinct 3 Place 2**

**Row 2A-B**

Includes 29 volumes (1887-1977) for:

1887-1893

1943-1945

1894-1897

1945-1946

1901-1917

1947-1951

1917-1933

1951-1953

1934-1935

1953-1956

1937-1939

1956-1957



1939-1941	1965-1966
1941-1943	1966-1967
1967-1968	1970
1968	1970-1971
1968-1969	1972-1973
1969	1974
1969	1975
1969-1970	1975-1976
1970	1977

**Travis County Inquest Docket J. P. Precinct 4**

**Row 2A**

Includes volume for: 1939-1973

**Travis County Death Record J. P. Precinct 4/6**

**Row 2B**

Includes two volumes: 1966-1970, 1970-1978

**Travis County Inquest Docket J. P. Precinct 5**

**Row 2D**

Includes 9 volumes for:

1895-1933	1953-1960
1935-1942	1960-1972
1944-1947	1972-1973
1947	1973-1974
	1972

**Travis County Inquest Docket J. P. Precinct 6**

**Row 2A**

Includes volume for: 1897-1935

**City of Austin Inquest Docket Municipal Court**

**Row 2A**

Includes 8 volumes for:

1970-1971

1973-1974

1973

1976-1977

**Travis County Register of School Vouchers**

**Row 2C**

Includes volumes (5 ledgers) for:

1933-1944

1945-1948

1948-1951

**Travis County Trustees Election Record**

**Row 2C**

Includes 1 volume for: 1943-1979

**Travis County Teachers' Certificate Record**

**Row 2C**

Includes 3 volumes for:

1935-1969c

1956-1977

1973-1975

**Travis County Schools Receipts and Dipursments**

**Row 2C**

6 Volumes

**Travis County Teachers' Daily Register**

**Row 2B-C**

Box1 1949-1950

1950-1951

1951-1952

Box2 1951-1952

1952-1953

1953-1954

Box3 1954-1955

1955-1956

Box4 1956-1957  
1957-1958

Box5 1957-1958  
1958-1959  
1959-1960

Box 6 1959-1960  
1960-1961

Box7 1961-1962  
1962-1963

Box8 1962-1963  
1963-1964  
1964-1965  
1965-1966  
1966-1967

**Travis County School Superintendent Land & Survey Rec**

**Row 2C**

Includes box for: 1914-1962

**Travis County School Board Minutes**

Box 1 of 2 1911-1920  
1920-1927  
1926-1946

**Row 2C**

Box 2 of 2 1946-1968  
1968-1978

Records (folder) 1978

**Travis County Index to School Trustees Minutes**

**Row 2C**

Includes volume for: 1927-1934

**Travis County Deed Records**

**Row 2C**

2 volumes

1844-1849

**Travis County Treasurer's Register (added)**

**Row 2D**

2 volumes

1887-1894 1896-1901

**Travis County School Census**

**Row 1A**

Includes volumes 81 volumes for: 1913-1914 through 1969-1970

# An Adulteress and Fallout of a Civil War Enlistment

---

*Earle F. McBride*

**Margaret Jane “Jennie” MCBRIDE**, my great grandaunt, was the only daughter of Francis and Hannah MCBRIDE. She was born in PA in 1852<sup>1</sup> either in Delaware Co. in a suburb of Philadelphia, where her parents lived in 1850<sup>2</sup>, or in Washington Co., where her parents went for the birth of their first child, George. Numerous MCBRIDE families lived in Washington Co. and Francis and Hannah went there to be with his relatives for the birth of George. They may have done likewise for the birth of Margaret. Soon after Margaret’s birth the family moved to Rock Island Co., IL, where her father worked as a laborer. In 1857 Margaret’s father, Francis, an Irish immigrant, died when a water well that he was digging caved in and buried him.<sup>3</sup> Hannah MCBRIDE became a widow at age 32 and was left with son George, age 8, and Margaret, age 5.

Three years later (1860) the family lived in Camden Mills, IL (now Milan, a suburb of Rock Island). Hannah had real estate worth \$150 (\$3600 in 2010 dollars) and personal property valued at \$30.<sup>4</sup> How she supported herself and children is not recorded.

Margaret married Civil War veteran **Charles EMEIGH** in Port Byron, IL, on 21 January 1868.<sup>5</sup> This couple had a troubled marriage stemming, possibly, from the combination of Charles’ poor health following his service in the Civil War and the youth of Margaret; she married at age 16 and was a mother 8 1/2 months later. The couple had four children, but Blanch, born in September 1868, lived only nine days, and Clara, born in June 1873, lived only three years.<sup>6</sup> Sons George William (1870-?) and Charles Porter (1876-1961) lived to adulthood.

**Charles EMEIGH** was born 23 September 1843 in Marysville, IN.<sup>6</sup> He was the sixth of eight children of **Jacob B.** and **Sarah I. JOHNSON EMEIGH**. The 1840 census shows that Jacob lived with his wife and children in New Albany, Floyd Co., IN; his livelihood and assets are not given.<sup>7</sup> In 1860 Charles’ family lived in Princeton, Scott Co., IA, where Jacob was a tailor with personal property worth \$200.<sup>8</sup> Six days before son Charles was enumerated with his family, he was also enumerated in the household of William SCOTT and his wife, a farmer couple who also lived in Princeton. Scott’s occupation is listed as farmer, so at least part time Charles lived and worked on SCOTT’s farm. Charles also attended school within the year.<sup>9</sup>

Charles served two enlistments with the Union Army during the Civil War. He suffered a battle injury and subsequently applied for both a simple veteran’s pension and a military disability pension. He fought red tape for more than four decades to get the disability pension; the story is told in a file of legal-size pages an inch thick (see below).

Charles enlisted very early in the Civil War at age 18 on 18 September 1861 in the 13th Regt., Iowa Infantry. He enlisted in Davenport, IA, when he still lived in the nearby village of Princeton. Charles

was mustered out on 28 October of the same year. He re-enlisted on New Year's Day of 1864, about 2 1/2 years later in Co. E, 13th Regt. Iowa Infantry. He was promoted to Fourth Corporal on 22 January 1864 and to Fifth Sergeant on June 1 of that year. Capt. William A. SHIRK led Charles' company against Confederate forces in the Battle of Peach Tree Creek near Atlanta, GA, on 21 or 22 July 1864. Charles was struck in the left thigh by a minie ball that passed completely through his leg. He was treated in the field hospital at Marietta, Georgia. On 1 April 1865 he was promoted to Fourth Sergeant and on 7 June of the same year promoted to Third Sergeant. About a month later (July 21) he was mustered out of the Army in Louisville, KY.<sup>6, 10</sup>

Charles returned to Princeton and underwent treatment for his wound and other illnesses at the "N S Hospital" (no longer identifiable) in Davenport. He applied for a veteran's pension and also an invalid pension on 21 Feb. 1866 in Rock Island.<sup>6</sup> He claimed in 1868 that the wound disabled him to the extent that he could not obtain subsistence by manual labor and that he "had no particular business". However, he supported himself and his family by working as a barber for many years.

Six years later (1870) Charles, wife Margaret, three-month-old son George, and Margaret's mother, Hannah, lived in Port Byron, IL, on the banks of the Mississippi where Charles still worked as a barber. Charles had assets worth \$200.<sup>11</sup> The EMEIGHS lived only four houses from the Barber CURTIS family (spouse and six children), the family of Margaret's sister-in-law.

The wound to Charles' leg caused nerve damage, which made him occasionally abandon his work as a barber owing to being unable to stand for long periods of time. His medical problems included catarrh (chronic sinus infection), arthritis, nervousness, abdominal pains, sleeplessness, etc. Doctors would not attribute these problems to his thigh wound, and his appeal for major disability pension was repeatedly denied. Charles' health may have been seriously eroded during his time in the army by conditions that were not related to his thigh wound (poor food; poor shelter, poor medical treatment, etc.). Thus, he probably deserved compensation, but was denied it. A testimonial letter from a war comrade dated 21 Aug. 1899 indicates that Charles had a severe cold in his head after the battle in which he was wounded.<sup>6</sup>

As his health worsened, Charles lived for a while in Deadwood, Dakota Territory; he was there during the 1880 census enumeration. The latter shows that he lived in the household of H.C. GENSEN on Main St.<sup>12</sup> Whether he was there for his health or some other purpose is uncertain. Margaret, her two sons, and mother, Hannah MCBRIDE, then lived in Rock Island, IL. Interestingly, Charles was also enumerated with his family in the Rock Island County census for the same year (1880).<sup>19</sup> Charles' occupation is given as barber in both census records, which were enumerated only four days apart. He and his family lived in Rock Island, IL, and Davenport, IA, until about 1881, when the family moved to Minnesota. In 1883 they lived in St. Paul. In 1885 while waiting for his divorce to be completed he lived in the West Hotel in Minneapolis, MN. He also worked as a barber in the same hotel.<sup>6</sup>

In September 1884 Charles petitioned the 4th District Court in Minneapolis for his divorce from Margaret Jane EMEIGH on the basis of adultery and abandonment. It took five months and twelve court documents to complete the transaction, but on 21 Feb. 1885 the divorce was granted.<sup>14</sup> The court required that a summons for Margaret be published in the Minneapolis newspaper for six weeks. The sheriff attested that he could not find Margaret/Jennie in the city or county. Charles

testified that between November 1882 and 15 April 1883 he was confined to his bed with typhoid fever and that Margaret refused to provide medication, food, and to otherwise see to his needs. She abandoned him. From November 1882 onward she committed adultery with various unknown men and Charles EPPS, a black man. Sometime before 23 April 1883 Margaret left the city with her two sons and Charles EPPS and was thought to have gone to Council Bluffs, IA.<sup>15</sup>

I have not been able to find Margaret after 1883 and she remains a brick wall. But there are some interesting facts. A Charles EPPS, no occupation given, is listed in the 1886 Minneapolis City Directory as living at 512 South 4th St. Margaret's lover apparently returned to Minneapolis. There is no other listing for Charles EPPS in the 1882-84 directories, although a C.G. EPPS worked as a brakeman for the C.M. & St. P. Railroad (boarded at 215 South 11th St) in 1882 and a C.H. EPPS worked as a barber for C.A. ORTEN and boarded at 11th St. on the corner of 2nd Avenue South. Is it just coincidence that Charles EMEIGH and C.H. EPPS both were barbers? Also intriguing is the directory information that an Alfred EPPS worked as a "hallman" and "bellman" in the West Hotel during 1886-87. Charles EMEIGH worked as a barber in the West Hotel in 1886.<sup>16</sup> Was Charles EPPS related to Alfred EPPS? More recent directories for Minneapolis list only female EPPS, none of them Margaret or Jennie.

Three months after his divorce, Charles remarried. It is clear that he developed a new love interest before he applied for a divorce from Margaret.

## SUMMONS

*State of Minnesota In Direct -----, County of Hennepin, 4th District Court:*

*Charles Emeigh, plaintiff vs. Margaret J. Emeigh, defendant*

*The State of Minnesota to the above named defendant:*

*You, Margaret J. Emeigh, are hereby summoned and required to answer the complaint in above entitled section, which is on file in the office of the clerk of this court, at the court house in Minneapolis, Minnesota; and to serve a copy of your answer to the said complaint on the subscriber at this office in the city of Minneapolis, in the county of Hennepin, and state of Minnesota, within thirty days after the service of this summons upon you, exclusive of the day of such service and if you fail to answer the said complaint within the time aforesaid, the plaintiff in this action will apply to the said court for the relief in said complaint demanded, together with the costs and disbursements of this action.*

*Dated September 22, 1884.*

*J. W. Gilger, Plaintiff's Attorney*

*Minneapolis, Minnesota<sup>17</sup>*

Charles' second marriage was to **Rose HAYDEN** on 31 May 1885 in St. Paul, MN.<sup>6</sup> She was born 20 May 1862 in MA. The only information about her comes from the 1910 census<sup>18</sup> and a comment in Charles' pension files that she was the widow of **Fred ATWOOD**. A Civil War soldier index lists a Fred O. ATWOOD as a veteran in the Union Army, but NARA is unable to find his file. Rose's parents were

born in Canada; she had one child, but it was not living in 1910. Charles was not the father of her child. She had been married to Charles for 25 years.<sup>18</sup> Rose died in Minneapolis on 24 July 1915 at the age of 53 and is buried in the Lakewood Cemetery there and has a simple headstone.<sup>19</sup>

Below is a summary of the thick file on Charles' petitions for a disability pension. It shows that government red tape is nothing new. I found it interesting that the U.S. Government form that medical doctors had to submit to the Bureau of Pensions was a drawing of a generic male figure showing a front and a profile on which the locations of injuries were to be marked. An oak leaf covered the area of the male genitals!

Charles applied for a military service pension in 1866 in Rock Island, IL, and shortly after this date for a disability pension. His military service pension of \$2.67/month started in 1866 and was increased to \$4 in 1868; increase denied in 1873; increased to \$6 in 1878 after intervention by lawyers. He fought, as noted, for years to get a disability pension in addition to his service pension. In 1914 he received \$30/month. In 1883 he reported that he was becoming blind in the right eye, although this affliction was not mentioned in subsequent documents. In spite of nearly yearly requests for a disability pension, testimonies from doctors about his condition, and testimony of friends and even his former company captain, appeals of a "pension lawyer" and of a U.S. congressman from Minnesota, Charles was consistently denied a disability pension. However, he attended a sanitarium operated for former soldiers in 1916 and then moved to an old soldier's home operated by the U.S. Army near Minneapolis.

In 1879 Charles was age 35, 5' 9 1/2" tall, weighed 130 pounds, had a dark complexion, his respiration was 18, his pulse 71. In 1880 Charles again applied for an increase in pension and submitted a doctor's report: 5' 10", 130 pounds, respiration 19, pulse 90; "was struck by a minie ball upon the anterior surface of the left thigh at about the center ranged inwards and slightly upwards and escaped from the inner surface of the thigh. An abscess formed and left a cicatrix at point of opening near the groin. The left thigh seems somewhat enlarged. Claimant states that he has a constant prickling sensation throughout thigh and knee, states that he has constant pain throughout left side of body, head, and left arm, also affects the memory and temper. Has a twitching in the left eye and the right is gradually becoming impaired. Habits are regular." Signed by George CRAIG, M.D.<sup>6</sup>

In 1885-7 Charles was still working as a barber. He is listed in the Minneapolis City Directories for 1886 and 1887 as living in the West Hotel, 816 Hennepin Ave; his barbershop was on the corner of 7th Street and Nicollet. On 4 August 1898 he wrote a personal appeal to the pension office. This document is a General Affidavit that testifies he is Charles EMEIGH and "That I am the claimant in the above cited claim, that I am unable to furnish any testimony of the surgeons or assistant surgeons of my Regiment showing treatment while in the U.A. since for the reason that I did not receive treatment at their hands, but was treated by Dr. Stone in hospital at Davenport, Iowa. I have not known of Dr. Stone since the civil war.

From my discharge to the present time I have been treated by Dr. Fleming of Port Byron, Ill and Dr. Wm Gault of Rock Island, Ill both now dead. I have depended upon the prescriptions from said doctors, patent medicines, and home remedies all together for my treatment of disabilities for which I have applied for pension. I respectfully request that my claim be adjudicated on the evidence found



herewith and that the above be accepted in lieu of any other evidence acquired, as it is the best evidence obtainable.

Charles Emeigh”<sup>6</sup>

An affidavit of 24 Sep 1896 by Buren R. SHERMAN, former Captain of E Company states: “I was in Captain E. Company, 13th Regt Iowa Infy Volunteers in the War 1861-5 - that Charles EMEIGH was a member of said Company, and during the summer of 1862, from March to October, the said EMEIGH was a sufferer because of Chronic Diarrhea, and much of the time unable for military duty, but attempted to do cooking instead- and so continued until my [illegible] resignation in 1863.”<sup>6</sup>

In 1906 Charles sought the help of Representative Loren FLETCHER (MN) in his quest for an invalid pension. This request was also denied. In 1914 his pension was raised to \$30/month, but his invalid pension was denied on basis that he had not shown that he was incapable of manual labor.

The 1910 census shows that he lived in a rented house on 8th Street, 5th Ward of Minneapolis. Census information was probably given by his spouse, Rosa H., who missed his age by two years (65) and erroneously reported that he was born in Iowa and that his parents were born in Nebraska. At this time Charles still worked in a barbershop and the couple had been married 25 years.<sup>20</sup>

In 1912 Charles and Rosa lived at 419 East 18th St., Minneapolis. In 1915 Charles reapplied for a pension and had the testimony of six former infantry buddies support his claim. He was living at flat 1, 1604 5th Ave. South in Minneapolis.

On 27 April 1916 Charles was admitted to the Battle Mountain Sanitarium, National Home for Disabled Volunteer Soldiers, in Hot Springs, S.D. and discharged from there 7 August in the same year. Shortly thereafter he moved to the Minnesota Soldier's Home operated by the U.S. Army outside of Minneapolis.<sup>6</sup> He lived there two years four months and died there 13 October 1918 at the age of 75 of chronic bronchorrhea of 6 years.<sup>21</sup> No obituary appears in either Minneapolis newspapers for the period of 24-31 July 1915. Charles was buried on 17 October 1918 in Lakewood Cemetery, Minneapolis.<sup>22,23</sup> His grave is unmarked.

## Sources

1. 1860 US Federal Census (Population schedule), Camden Mills, Rock Island Co., IL; enumerated 9 June, page 34; lines 19-21.  
[http://search.ancestry.com/iexec?htx=View&r=an&dbid=7667&iid=4213727\\_00286&fn=Margaret+Jane&ln=Mcbride&st=r&ssrc=&pid=37225396](http://search.ancestry.com/iexec?htx=View&r=an&dbid=7667&iid=4213727_00286&fn=Margaret+Jane&ln=Mcbride&st=r&ssrc=&pid=37225396)
2. 1850 Federal Census (Population Schedule); Smith Twp., Washington Co., PA; family # 124; page 9; Lines 33-35; roll 833; enumerated Oct. 13, 1850.  
<http://search.ancestry.com/Browse/view.aspx?dbid=8054&path=Pennsylvania.Washington.Smith.28>
3. Note in the *Rock Islander* newspaper for Wednesday, 9 September 1857 as abstracted by Janet K. Pease (1978) *Genealogical Abstracts from Rock Island County, Illinois Newspapers*, volume II, p. 85 [Family History Library, Salt Lake City, 977.3393, B38p, v. II]
4. 1860 Federal Census (Population Schedule): Camden Mills; Rock Island Co., IL; T17N, R2W; p. 34.

5. Marriage license #5626, control #165244, volume C, page 104; Recorded 21 Jan 1868; my copy has no identification, but the data above are from the *Index of Rock Island County Marriages, Part 1 of 4, 1833-1869*; published by the Blackhawk Genealogical Society, page 118.
6. Charles Emeigh: NARA Soldiers file #73393, Can 1168, Bundle 56; documents span 1880-1916.
7. 1840 Federal Census (Population Schedule): New Albany city, Floyd Co., Indiana; roll 79, p. 114.
8. 1860 Federal Census (Population Schedule): Princeton, Scott Co., IA; dwelling 349, family 352; p. 84; lines 4-8; enumerated 2 July 1860, roll 340.
9. 1860 Federal Census (Population Schedule): Princeton, Scott Co., IA; dwelling 350, family 353; p. 53; lines 7-10:  
[http://search.ancestry.com/iexec?htx=View&r=an&dbid=7667&iid=4230552\\_00055&fn=Charles&ln=Emeigh&st=r&ssrc=&pid=5739090](http://search.ancestry.com/iexec?htx=View&r=an&dbid=7667&iid=4230552_00055&fn=Charles&ln=Emeigh&st=r&ssrc=&pid=5739090)
10. *The Roster of Iowa Soldiers-War of Rebellion*, Vol 2; p. 605 [from Genealogy.com].
11. 1870 Federal Census (Population Schedule): Port Byron Twp., Rock Island Co., IL; p. 271A; lines 24-26; 28; roll 273; enumerated 20 July.
12. 1880 Federal Census (Population Schedule): Deadwood, Lawrence Co., Dakota Territory; dwelling 242; ED 120; p. 255B; line 25; Ancestry.com image #230.
13. 1880 Federal Census (Population Schedule): Rock Island, Rock Island Co., IL, dwelling 116, family 118, p. 12; roll 254; Ancestry.com image # 277.
14. Divorce decree #19498, 4th Judicial District, District Court, Hennepin Co., MN; 21 Feb. 1885.
15. Petition to the Fourth District Court, Hennepin Co., MN; April 23, 1883.
16. Minneapolis City Directories 1882-1886: <http://www.fold3.com/image/#255065963>  
<http://www.fold3.com/image/#116|255065960>  
<http://www.fold3.com/image/#255070248>
17. Transcription of a newspaper clipping from the *Minneapolis Chronicle* attached to Affidavit of Publication; November 3, 1884; sworn by J. C. Whitney, employee of the newspaper.
18. 1910 Federal Census (Population Schedule): Minneapolis, Hennepin Co., MN; dwelling 25; family 55; ED 99; page 2B; lines 77, 78.  
[http://search.ancestry.com/iexec?htx=View&r=an&dbid=7884&iid=31111\\_4330226-00783&fn=Rose+H&ln=Emeigh&st=r&ssrc=&pid=159939492](http://search.ancestry.com/iexec?htx=View&r=an&dbid=7884&iid=31111_4330226-00783&fn=Rose+H&ln=Emeigh&st=r&ssrc=&pid=159939492)
19. Minnesota State Death Record for Rose Emeigh: Record #1915-MN-018768. Also visit to the cemetery 7/2010.
20. Minneapolis City Directory, 1909, p. 516:  
<http://distantcousin.com/Directories/MN/Minneapolis/1909/Pages.asp?Page=0516>
21. Letter of Oct. 14, 1918, to the Commissioner of Pensions in Washington, D.C. from Adjutant R. R. Henderson of the Minnesota Soldier's Home. See source 6.

**22.** Minnesota Cemetery Inscription Cemetery Index; Dalby, John, 2003, Minnesota Burials, Provo, UT.

**23.** Death Certificate for Charles Emeigh (1843-1918): Minnesota Division of Vital Statistics: File #25883; Local file # 3571.

# Miscellaneous Texas Obituaries

---

*Connie Perdue, compiler*

## Funeral Rites Held Today For Mrs. Swenson

*Denton Record-Chronicle, September 19, 1949, Page 2*

Funeral services for Mrs. Jenny Bickler Swenson, 74, who died at her home, 323 Normal, Sunday at 11:30 p. m., were to be held today at 4 p.m. at the First Presbyterian Church, USA. Burial was to follow in the Trinity Cemetery.

The Rev. Joseph J. Copeland, church pastor, was to have officiated. Shepard Funeral Home had charge of arrangements.

Mrs. Swenson was born in Austin, Jan. 8. 1875. She was a member of several clubs in Denton including the Women's Shakespeare Club, the City Federation of Women's Clubs and Delta Kappa Gamma.

Pallbearers were Clarence Swenson, Dr. B. B. Harris, Joe Bowers, Dr. V. Y. Craig, Dr. Henry Dannelly and Dr. S. B. McAllister, all of Denton. Honorary pallbearers included R. W. Bass, Dixie Boyd, Dr. Blackburn, Dr. Bridges, Dr. Jack Johnson, Dr. W. J. McConnell, Dr. L. W. Newton, Dr. B. H. Hansen, Dr. Alex Dickie, J. N. Brown and B. E. Looney.

She is survived by her husband, John Robert Swenson, and one son Andrew B. Swenson, both of Denton; two sisters, Mrs. B. F. Pittenger, Austin, and Mrs. Camilla Von Briesen, Milwaukee, Wis.; four brothers, Harry, Max, Ralph and George Bickler, all of Austin.

Mrs. Swenson's family requests that friends wishing to offer a tribute to make contributions to the equipment fund of Flow Memorial Hospital in care of either Denton Bank instead of sending flowers.

NOTE: Jennie's parents were Jacob Bickler and Martha Lungkwitz. Jacob founded The Texas German and English Academy in Austin in 1876, and directed by him until his death in 1902, with the exception of five years when he served as Superintendent of the Public Schools of Galveston.

## NT Bookseller, Swenson, Dies

*Dallas Morning News, 1975-01-19, Page 44*

DENTON, Texas - Andrew (Swede) Swenson, 63, manager of the North Texas State University Bookstore, died Saturday in Dallas' Methodist Hospital.

Services are set for 2 p.m. Monday in the First United Methodist Church in Denton with interment in Roselawn Memorial Park.

Swenson was born in Denton, where his father was a faculty member at what was then North Texas State Normal College.

He attended elementary, junior and senior high school in the university's demonstration school and later earned bachelor and Master of Science degrees at NTSU. Over the years, he also completed extensive work on a doctoral degree.

After several years away from the campus teaching in Coleman, Roxton, Fort Worth and Houston, Swenson returned to NTSU in 1948 to manage the school's first bookstore. Until that time, the college had rented textbooks to students through a rental library.

NOTE: Andrew was the son of John Robert Swenson and Jennie Marie Bickler, grandson of Jacob Bickler.

#### Miss Swenson Dies of Pneumonia

*Denton Record-Chronicle*, April 23, 1936, Page 4

Miss Benedicta Suzanne Swenson, 21, daughter of Mr. and Mrs. J. R. Swenson, 323 Normal Avenue, died at the family home Wednesday at 4:30 p. m., following a week's illness of influenza, which developed into pneumonia. She was brought from Krum, where she was teaching, last Thursday, and her condition had been grave since Monday.

Funeral services will be held Friday at 10 a. m. in the home, conducted by Revs. L. P. Parker and W. Fred Galbraith, Presbyterian ministers. Burial will be in Trinity cemetery, east of Denton. Pallbearers will be: Charles Langston of Krum, A. S. Keith, W. S. Knox, H. P. Bickler of Austin, and C. R. Swenson, the last two uncles, and Dr. V. Y. Craig. The Green Jacket Club of Teachers College will be honorary pallbearers.

Miss Swenson was born Dec. 30, 1914, in Denton. Besides her parents she is survived by a brother, Andrew Swenson of Coleman, an 84-year-old grandmother, Mrs. Jacob Bickler of Austin, and a number of other relatives. She was a graduate of Teachers College in the spring class of 1935, and had been, teaching this school year in Krum. While in college she was affiliated, with the following organizations: Green Jackets, president in 1935; Kappa Delta Pi, Alpha Chi, Gammadions, English Majors' Club, student faculty council, vice president of the sophomore class in 1933 and representative to Who's Who in American Colleges. She was a member of the Presbyterian Church.

Following graduation last spring Miss Swenson, in company with several cousins, made an automobile tour of European countries.

All classes at the Teachers College will be dismissed from 10 until 11 o'clock Friday morning to permit the students and faculty members to attend the funeral.

NOTE: Benedicta was the daughter of John Robert Swenson and Jennie Marie Bickler, granddaughter of Jacob Bickler.

Mrs. M. H. Benagh, Jr.

*Corpus Christi Caller-Times (TX)*, September 25, 1971, Page 8

Funeral services for Mrs. Maclin H. Benagh Jr., 55, of 1209 Ocean Drive, will be at 3:30 p.m. today in Seaside Mausoleum Chapel with burial in Seaside Memorial Park. Cage-Mills Funeral Home is in charge of arrangements.

Mrs. Benagh died Wednesday. A native of Austin, she had lived here for 21 years.

NOTE: Marigold SHELBY Benagh was the daughter of Lemuel Evert SHELBY and Mabel Clair WRIGHT and great-granddaughter of Joseph WRIGHT and Rachel HAMILTON. Joseph Wright was a civil engineer and surveyor and also earned a diploma as a physician in Tennessee. He practiced during the 1830's and 40's in Columbia, Tennessee, then he and Rachel moved to Texas in 1851. Dr. Wright was the original surveyor for the University of Texas campus after he arrived in Austin. He also set up his practice as a physician and was one of the first doctors in Austin. He lived to be just six days short of 100 years old.

Mrs. Isaacks' Funeral Today

*El Paso Herald-Post*, September 3, 1934, Page 8

Illness of Two Weeks Is Fatal To Church Worker Here

Funeral services were to be held at 4 p. m. today in the First Christian church, Oregon, and Franklin Sts., for Mrs. Minnie Rutledge Isaacks, 68, wife of Judge S. J. Isaacks, Rev. A. A. Hyde was to officiate.

Mrs. Isaacks died yesterday at her home, 3021 Federal St., after an illness of about two weeks. Her condition had been regarded as critical since last Wednesday.

Mrs. Isaacks had been active in work at the First Christian church since the family moved to El Paso from Midland 17 years ago.

Mrs. Isaacks is survived by her husband, four sons, E. Buford Isaacks, Cisco; Rutledge Isaacks, Pecos; Jack, El Paso, and William Isaacks, Tucson, Ariz., and by three daughters, Miss Maude Isaacks, and Mrs. Inez Foster, El Paso, and Mrs. Wade Johnson, Cisco.

Burial was to be in Evergreen cemetery under direction of Kaster & Maxon mortuary.

NOTE: Minnie Willard Rutledge was born January 14, 1886 in Austin, Travis, Texas to Edward Armstrong RUTLEDGE and Mary Francis YOUNG.

William Carter, Former Head of R. R. Union Dies

*Morning Herald, Hagerstown, Maryland, Friday, March 16, 1923, Page 1,*

Former President Of B. L. F. & E. Expires In Baltimore.

(By Associated Press)

Baltimore, March 15.-Wm. S. Carter, former president of the Brotherhood of Locomotive Firemen and Enginemen, died at a local hospital here tonight aged 63 years.

Mr. Carter had been suffering from arterial sclerosis. He was removed to the hospital from Washington three weeks ago and his condition turned for the worse last Saturday. For the past 48 hours Mr. Carter had been in a state of coma and died without regaining consciousness.

At the bedside of Mr. Carter when he died were his wife and son Lee Carter, who arrived here from Austin Texas, yesterday, Harry E. Reed, a son-in-law connected with the C. S. Railroad Labor Board at Chicago, D. B. Robertson, president of the Brotherhood of Locomotive Firemen and Enginemen and A. H. Hawley, general secretary and treasurer of the organization.

The body of the former Brotherhood chief will be removed to Washington where he will be given a Masonic funeral either Saturday or Sunday.

NOTE: William Samuel CARTER was born August 11, 1859 in Austin, Travis, Texas. He was the son of Samuel Miles and Margaret Francis (Oliphant) Carter and the grandson of William M. OLIPHANT and Jane Elizabeth VAN ZILE.

MORTUARY

*Dallas Morning News, June 26, 1892, Page 2*

Mrs. W. S. Carter.

TAYLOR, Tex., June 22.-Mrs. Carter, consort of Will S. Carter, died last night.

NOTE: Mary Evalyn Gorsuch was born January 08, 1860 in Columbus, Colorado, Texas. She was the first wife of William Samuel Carter (above).

Ex-Commissioner of Lubbock Dies

*Morning Avalanche, Lubbock, Texas, March 15, 1935, Page 1*

Paul von Rosenberg, 80, who was a Lubbock county commissioner when the courthouse was erected, died at the home of a daughter, Mrs. O. D. Hargis, at 1804 Avenue X Thursday afternoon.

Funeral services will be conducted at Rix-Bynum Funeral home at 4 o'clock this afternoon by Rev. Dr. Jack M. Lewis, pastor of First Presbyterian church. Burial will be in a cemetery here.

Mr. von Rosenberg, who was born in Fayette County Aug. 13. 1854, was married to Miss Cornelia McChristian Nov. 14, 1876. Mrs. von Rosenberg died Dec. 3, 1922.

The former county commissioner had passed most of his life in Austin before he came to Lubbock County in 1913. Stockman and farmer, he also had engaged in the mercantile business. He served as a county commissioner In Travis county. He was an rider in the Cumberland Presbyterian church both in Austin and in Lubbock.

Survivors were two daughters, Mrs. Hargis, and Mrs. O. B. Hewitt, San Antonio; one son, Wesley von Rosenberg, Albuquerque, N. M.; a grandson, Paul Harris, Austin; two sisters, Mrs. Lena Biffel and Minna von Rosenberg of Austin.

NOTE: Paul von Rosenberg was the son of Carl Wilhelm von ROSENBERG and Augusta Franziska ANDERS.

#### Former Lubbock Man Dies in Los Angeles

*Evening Journal, Lubbock, Texas, June 6, 1946, Page 11*

Information has been received here of the death of Wesley Von Rosenberg of Los Angeles, former resident of Lubbock.

He died May 29 in the Veterans administration hospital in west Los Angeles and a full military service was conducted Wednesday in the Veterans administration chapel in Los Angeles.

Survivors include two sisters, Mrs. O. D. Hargis and Mrs. O. B. Hewitt of Austin, formerly of Lubbock.

NOTE: Wesley was born May 16, 1892 in Manchaca, Travis, Texas. He was the son of Paul von ROSENBERG and Cornelia MCCUISTON.

#### Dr. Webb Interred In State Cemetery

*Dallas Morning News, 03-12-1963; Page: 4*

AUSTIN, Texas (AP)-Dr. Walter Prescott Webb was buried with other great Texans in the State Cemetery Monday, while tributes continued to mourn the historian's death.

A resolution was introduced in the Texas House Monday giving "respectful recognition to the indelible imprint his work and though have left upon the life and culture of our state."

Shortly before, several hundred persons crowded around the graves of such famous Texans as Stephen F. Austin to witness the final rites in the gently rolling cemetery.

They included U.S. Sen. Ralph Yarborough, D-Tex., and several members of the Texas Legislature; J. Frank Dobie, Rice University history professors Dr. Frank Vandiver and Dr. Andrew F. Muir, Texas



historians; and Dr. H. H. Ransom and Dr. Joseph R. Smiley, University of Texas chancellor and president, respectively.

The funeral procession passed the hospital where Dr. Webb's wife has lain with multiple fractures since the couple's auto accident Friday. Doctors said her condition was unchanged.

Dr. Edmund Heinsohn, pastor emeritus of the University Methodist Church, described Dr. Webb to the crowded church audience as a historian who "who was not a photographer, but an artist."

"It is a far piece and a great distance from that Stephens County farm where Dr. Webb grew up to delivering the Harkness Lectures at the University of London."

Dr. Webb, 74, died Friday night in a one-car accident which occurred while he and his wife were returning from San Antonio, where he reviewed the couple's new book, "Washington Wife."

NOTE: Dr. Webb's first wife was Jane Elizabeth OLIPHANT who died June 28, 1960 in Austin, Travis, Texas. His second wife was Terrell Louise DOBBS who died December 15, 1994 in San Antonio, Bexar, Texas. Terrell's first husband was Fontaine Maury MAVERICK.

#### Death and Funeral Announcements

*Dallas Morning News*, 09-27-1973; Page: 7

#### IRWIN

B. F. (Bill), age 57, 2609 Harris Boulevard, Austin, died Wednesday in a local hospital. He had been a resident of Austin for twelve years and formerly lived in Abilene and Dallas. He was a member of the Episcopal Church of Good Shepherd, and a 32nd degree Mason. He was a member of Hobah Masonic Lodge Number 1394, AF&AM and Ben Hur Shrine Temple. He was a Navy Veteran of World War II and was associated with the Texas Education Agency. Survived by wife, Mrs. Nell Irwin, Austin; daughters, Mrs. Edwin B. Hopkins, Jr., Mrs. C. O. Watson, both of Dallas, Miss Debbie Irwin, Austin; cousin, Jess Irwin, Austin; sister, Mrs. Lillie Day and Mrs. Betty Moncrief, both of Dallas, Mother, Mrs. Walter Birch, Dallas; two grandchildren. Services 2 p.m., Friday, Episcopal Church of The Good Shepherd, Austin, Texas, Rev John A. Logan officiating. Interment Austin Memorial Park, Austin, Texas.

NOTE: Bill was the son of David Landon IRWIN and Lillie May DAY. He married Otha Nell WALLACE on April 09, 1938 in Dallas, Dallas, Texas. She was the daughter of Robert Lee WALLACE and Ellie Mae GOSSETT.

## MORTUARY

*Dallas Morning News*, 12-05-1901; Page: 7

VON ROSENBERG-Austin, Tex., Dec. 4.-William Von Rosenberg Sr. died at his home in this city today in his 81st year. He was a prominent citizen, a native of Ekittf, Prussia. He came to this country in 1849, settling in Fayette County, and moved to this city in 1854.

NOTE: Carl Wilhelm (William) von Rosenberg was the son of Johanna Dorothea (Frölich) and Peter Carl Johann von Rosenberg. His biography is in *The Handbook of Texas*.

# Matilda Charlotta Andersdotter Sjoberg Sponberg, My Mormormor

---

*Kay Dunlop Boyd*

Matilda was born December 18, 1859 in Nässjö, Jönköping, Småland. This is a large southern province in Sweden. Her parents were Anders Johan Jönsson (Sjoberg), 1826-1903 and Britta Helena Pettersdotter (Peterson), 1830-1894.

Anders parents were Jöns Andersson, 1791-1859, and Christina Jonsdotter, 1789-1869. Britta's parents were Petter Petterson, 1798-1864, and Maja Pettersdotter born 1804. These families lived in the same area of Sweden for many decades.

By 1867 when the famine became more threatening in Sweden, many Swedes left their homeland to travel to America. Often large numbers from a village would emigrate. As each one came over they would arrange for others from the same area to follow.

Britta Helena and her 6 youngest children left Sweden, probably from the port town of Goteborg on the west coast, on September 22, 1871 on the ship Cato for their trip to Hull, England. Johanna, 15, Matilda, 11, John Oscar, 7, Ida, 5, Emma, 3, and the youngest Amanda, 18 months, joined their mother on this voyage. They then traveled by train to Liverpool. Here Britta and her children boarded the steamer ship City of New York. They arrived in

New York on October 8, 1871. As one of the older girls in the family, certainly Matilda shared the responsibility of caring for the younger children on the three week journey across the Atlantic.

Anders, Matilda's father, immigrated in February 1869 and the oldest daughter Anna Marie followed in August of 1870. Now the entire family was together again. Three older sons previously died as infants. First they went to Paxton, Illinois before coming to Texas in 1874. In America Mr. Sjoberg took the name Andrew John and lived and worked on the Eppright farm in the area of Manor.

Matilda's mother Britta, often called Lena, was a charter member of the New Sweden Lutheran Church when it was organized in Manor in 1876 to serve the many Swedish families in the area. Her father filed his Declaration of Intent for Naturalization October 16, 1886.



**Matilda Sponberg**



**Andrew Sponberg**

I have little personal information on Matilda but from family pictures I can tell she was short in stature, maybe no more than five feet tall as was one of her daughters. Grandchildren remember that they looked forward to her visits so she must have been a warm caring woman. The earliest photograph I have of her is the one above with her dressed in her finery including a hat. From reading about Swedish traditions, most women in Sweden only wore scarves or little caps except for the wealthier ladies. Therefore this photo is noteworthy for that fact. I do not know if it is her wedding portrait.

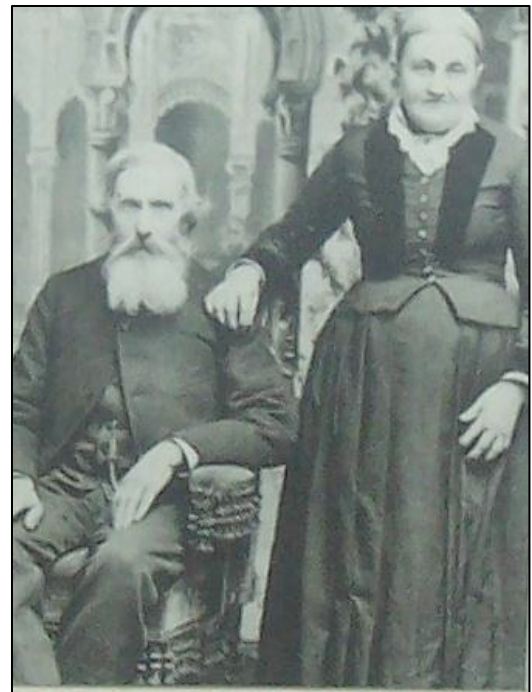
Matilda married Anders Johan Gustafson Sponberg on December 4, 1878. Known in Texas as Andrew John, or A. J. Sponberg, Matilda's husband immigrated to Travis County in 1871 following his brother August who came a few years earlier. In 1883 the family owned a small farm of 75 acres, two horses or mules and six cattle. They were neighbors to Matilda's parents and the Housers, her sister's family. The family farm was in Decker, a predominately Swedish community between Austin and Manor. The land is now covered by Decker Lake. Andrew, Matilda and the younger children moved to Manor by

1920. Andrew Sponberg also filed his Declaration of Intent for Naturalization in 1886.

Often referred to as Tilda or Tilde, Matilda was the mother of 13 children, eight daughters and five sons. The children were Nannie (Anderson), 1879-1969; Delia (Lundgren), 1881-1976; Margaret (Sellstrom), 1883-1963; Ester (Stromberg), 1886-1966 (my grandmother); Maude (Swenson), 1888-1982; Ida (Johnson), David, 1892-1969; Birdie (Lundell), 1895-1979; LeRoy, 1897-1932; Clarence, 1900-1942; Chester, 1902-1976; Alton, 1905-1973; and Noma, 1909-1935. All of the girls in the family married other Swedes as was the usual tradition. There were 30 grandchildren in the family although five of the siblings never had children, 55 great grandchildren and many, many great-great grandchildren.

Britta died in 1894. After his wife's death, Andrew sold his land and lived with the family of his daughter Emma Johnson in Manor until his death in 1903. Both Britta and Andrew are buried in the Manor City Cemetery.

Matilda's heart gave out and she died Tuesday afternoon, February 6, 1934, at the home of her daughter



**Anders and Britta Sjoberg**

Ida. Services were held from the home and she was buried in the Oakwood Annex Cemetery the next day. On March 23, the remains of Andrew and her son LeRoy were moved from Manor City Cemetery and reinterred next to her.



**Andrew with moustache, Matilda with glasses, their children and grandchildren at a family gathering about 1917.**

# WILLIAM GEORGE ROUNTREE

---

*Travis County Pioneer # 06-18, #06-20, #06-22  
Proven to be in Travis County in 1860 from Tennessee*

## *Generation 1*

William George<sup>1</sup> ROUNTREE was born 1818 in Lincoln, Tennessee, and died 23 May 1895 in Travis, Texas. He married Mary Ellen MAYFIELD 8 Jul 1847 in Lincoln, Tennessee. She was born 24 Jan 1830 in Lincoln, Tennessee, and died 18 Apr 1916 in Travis, Texas. She is buried in the Boggy Creek Masonic Cemetery.

## *Generation 2*

George William<sup>2</sup> ROUNTREE (*William George<sup>1</sup>*) was born 11 Jan 1862 in Travis, Texas, and died 26 Oct 1946 in Blanco, Texas. He married Emma Josephine HOPKINS 17 Jan 1882 in Travis, Texas. She was born 3 May 1861 in Campbell, GA, and died 16 Mar 1947 in Blanco, Texas.

## *Generation 3*

Mary Belle<sup>3</sup> ROUNTREE (*George William<sup>2</sup>, William George<sup>1</sup>*) was born 20 Aug 1900 in Blanco, Texas, and died 4 Jul 1978 in Bastrop, Texas. She married Victor Emanuel STRIEGLER 15 Oct 1917 in Blanco, Texas. He was born 12 Jun 1896 in Gillespie, Texas, and died 12 Oct 1970 in Gillespie, Texas.

Children of Victor STRIEGLER and Mary ROUNTREE are:

Lillian Irene STRIEGLER

Maurice STRIEGLER

Gladys Mary STRIEGLER



# REUBEN and SARAH MORRISON HORNSBY

---

*Travis County Pioneer # 06-025*

*Proven to be in Travis County in 1832 from Mississippi*

## *Generation 1*

Reuben<sup>1</sup> HORNSBY was born 07 Jan 1793 in Floyd, Georgia, and died 11 Jan 1879 in Travis, Texas. He is buried in the Hornsby Cemetery. He married Sarah MORRISON 01 Dec 1815 in Warren, Mississippi. She was born 27 Jul 1796 in Warren, Mississippi, and died 20 Apr 1862 in Travis, Texas. She is buried in the Hornsby Cemetery.

## *Generation 2*

Sarah Ann<sup>2</sup> HORNSBY (Reuben<sup>1</sup>) was born 21 Mar 1834 in Travis, Texas, and died 23 Mar 1866 in Travis, Texas. She married Jesse F. BURDITT 14 Nov 1848 in Travis, Texas. He was born 30 Sep 1829 in Alabama, and died 28 Dec 1862 in Arkansas.

## *Generation 3*

Ruben<sup>3</sup> BURDITT (Sarah Ann<sup>2</sup> HORNSBY, Reuben<sup>1</sup>) was born 02 Aug 1857 in Travis, Texas, and died 01 Apr 1928 in Jackson, Texas. He married Mary Irene PUCKETT 28 Feb 1878 in Travis, Texas. She was born 18 Nov 1857 in Coryell, Texas, and died 07 Jun 1936 in Harris, Texas.

## *Generation 4*

Mary Dena<sup>4</sup> BURDITT (Ruben<sup>3</sup>, Sarah Ann<sup>2</sup> HORNSBY, Reuben<sup>1</sup>) was born 12 Aug 1896 in Wharton, Texas, and died 04 Aug 1975 in Harris, Texas. She married Alvin Theodore LANDIN 26 Dec 1915 in Jackson, Texas. He was born 01 Jul 1890 in Burt, Nebraska, and died 12 Mar 1968 in Fort Bend, Texas.

## *Generation 5*

Florence Irene<sup>5</sup> LANDIN (Mary Dena<sup>4</sup> BURDITT, Ruben<sup>3</sup>, Sarah Ann<sup>2</sup> HORNSBY, Reuben<sup>1</sup>) was born 03 Dec 1916 in Jackson, Texas, and died 15 Apr 1995 in Bexar, Texas. She married Leon Albert MANGUM 04 May 1938 in Fort Bend, Texas. He was born 13 Feb 1914 in Jackson, Texas, and died 26 Feb 1995 in Bexar, Texas.

Child of Florence Landin and Leon MANGUM is:

Mary Darlene<sup>6</sup> MANGUM.

# RICHARD STRÖMBERG and ADELINA GÖK

---

*Travis County Pioneer #06-026*

*Proven to be in Travis County in 1870 from Sweden*

## *Generation 1*

Richard Eustachius<sup>1</sup> STRÖMBERG was born 03 Nov 1844 in Östergötland, Sweden, and died 13 Mar 1908 in Travis, Texas. He is buried in Oakwood Cemetery. He married Adelina NILSDOTTER GÖK 08 Jun 1872 in Travis, Texas. She was born 04 Mar 1850 in Jonköping, Sweden, and died 10 Jan 1944 in Travis, Texas. She is buried in Oakwood Cemetery.

## *Generation 2*

Hjalmar Phar<sup>2</sup> STROMBERG (*Richard Eustachius<sup>1</sup> STRÖMBERG*) was born 21 Aug 1882 in Travis, Texas, and died 04 Aug 1969 in Travis, Texas. He married Ester Mary Ann SPONBERG 25 May 1905 in Caldwell, Texas. She was born 14 Apr 1886 in Travis, Texas, and died 22 Oct 1966 in Caldwell, Texas.

## *Generation 3*

Adeline Matilda<sup>3</sup> STROMBERG (*Hjalmar Phar<sup>2</sup>, Richard Eustachius<sup>1</sup> STRÖMBERG*) was born 10 Dec 1909 in Caldwell, Texas, and died 30 Sep 1998 in Travis, Texas. She married Thomas Jefferson DUNLAP 02 Jul 1939 in Caldwell, Texas. He was born 12 Nov 1908 in Bastrop, Texas, and died 21 Nov 1988 in Travis, Texas.

Child of Adeline STROMBERG and Thomas DUNLAP is:

Mary Kay<sup>4</sup> DUNLAP.



# MAHALA MURCHISON

---

*Travis County Pioneer #06-031*

*Proven to be in Travis County in 1839 from South Carolina*

## *Generation No. 1*

Mahala<sup>1</sup> MURCHISON was born abt 1829 in South Carolina, and died 22 Jan 1912 in Travis, Texas. She is buried in Oakwood Cemetery. She married Frank STRAIN.

## *Generation No. 2*

Fannie<sup>2</sup> STRAIN (*Mahala<sup>1</sup> MURCHISON*) was born 01 Jun 1853 in Travis, Texas, and died 26 Mar 1936 in Grayson, Texas. She married Giles MADISON 15 Nov 1866 in Bastrop, Texas. He was born Jan 1851 in Gibson, Tennessee, and died 18 Dec 1919 in Bastrop, Texas.

## *Generation No. 3*

Hattie<sup>3</sup> MADISON (*Fannie<sup>2</sup> STRAIN, Mahala<sup>1</sup> MURCHISON*) was born 14 Oct 1874 in Bastrop, Texas, and died 01 Dec 1957 in Bell, Texas. She married Charley BRICE 12 Oct 1893 in Bastrop, Texas. He was born 05 Feb 1873 in Bastrop, Texas, and died 31 Dec 1926 in Bell, Texas.

## *Generation No. 4*

Lillie<sup>4</sup> BRICE (*Hattie<sup>3</sup> MADISON, Fannie<sup>2</sup> STRAIN, Mahala<sup>1</sup> MURCHISON*) was born 22 Jan 1907 in Williamson, Texas, and died 07 Oct 1997 in Cook, Illinois. She married Wiley HESTER 19 Aug 1943 in Cook, Illinois. He was born 14 Jan 1905 in Giles, Tennessee, and died 16 Aug 1993 in Cook, Illinois.

Child of Lillie BRICE and Wiley HESTER is:

Hattie Pearl<sup>5</sup> HESTER

(Malaha came to Austin as a 10 year old mulatto servant in the Alexander Murchison family and is thought to be the first Black person in the city. [www.ci.austin.tx.us/library/ahc/begin/firsts.htm](http://www.ci.austin.tx.us/library/ahc/begin/firsts.htm))

# Addison LANE

---

*Travis County Pioneer # 07-032*

*Proven to be in Travis County in 1850 from Tennessee*

## *Generation 1*

Addison<sup>1</sup> LANE was born 04 Jul 1804 in Grainger, Tennessee, and died 15 Aug 1872 in Nueces, Texas. He married Sally DENNIS 07 Oct 1824 in Grainger, Tennessee. She was born 14 Sep 1805, and died 14 Aug 1872 in Nueces, Texas.

## Generation 2

James Marion<sup>2</sup> LANE (Addison<sup>1</sup>) was born 30 Oct 1834 in IN, and died 15 May 1915 in Coleman, Texas. He married Letitia Ann BOYCE 06 Jan 1859 in Texas. She was born 21 Jun 1844 in Missouri, and died 15 May 1925 in Coleman, Texas.

## Generation 3

Helen Beatrice<sup>3</sup> LANE (James Marion<sup>2</sup>, Addison<sup>1</sup>) was born 23 Mar 1876 in Travis, Texas, and died 11 Mar 1972 in Wichita, Texas. She married George Franklin SMITH 08 Nov 1896 in Coleman, Texas. He was born 19 Dec 1871 in GA, and died 16 Apr 1956 in Wichita, Texas.

## Generation 4

Cleo Agnes<sup>4</sup> SMITH (Helen Beatrice<sup>3</sup> LANE, James Marion<sup>2</sup>, Addison<sup>1</sup>) was born 17 Aug 1902 in Haskell, TX, and died 30 Apr 1986 in Yoakum, Texas. She married Daniel S MCFATTER 10 Oct 1922 in Wichita, Texas. He was born 01 May 1890 in Claiborne, Tennessee, and died 25 Oct 1963 in Madison, Mississippi.

Child of Cleo SMITH and Daniel MCFATTER is:

Roy Earl McFatter<sup>5</sup> LEWIS

# WILLIAM and MARY NEELY ATWOOD

---

*Travis County Pioneer # 07-033  
Proven to be in Travis County in 1840*

## *Generation 1*

William W.<sup>1</sup> ATWOOD was born 04 Jan 1804 in Maine, and died 02 Jan 1872 in Travis, Texas. He is buried in Oakwood Cemetery. He married Mary C. NEELY 10 Jun 1829 in Hardeman, Tennessee. She was born 16 Jan 1811 in Maury, Tennessee, and died 19 Aug 1896 in Travis, Texas. She is buried in Oakwood Cemetery.

## *Generation 2*

Adela B.<sup>2</sup> ATWOOD (William W.<sup>1</sup>) was born 03 Oct 1838 in Hardeman, Tennessee, and died 15 Mar 1918 in Travis, Texas. She married August B. PALM 26 Jun 1861 in Travis, Texas. He was born 19 Aug 1834 in Sweden, and died 19 Feb 1921 in Travis, Texas.

## *Generation 3*

Rufus Polk<sup>3</sup> PALM (Adela B.<sup>2</sup> ATWOOD, William W.<sup>1</sup>) was born 24 Jul 1864 in Travis, Texas, and died 27 Apr 1960 in Taylor, Texas. He married Edith WILLIAMS 27 Dec 1886 in Dallas, Texas. She was born 08 Aug 1864 in Cornwall, England, and died 20 Feb 1934 in Wichita, Texas.

## *Generation 4*

William Polk<sup>4</sup> PALM (Rufus Polk<sup>3</sup>, Adela B.<sup>2</sup> ATWOOD, William W.<sup>1</sup>) was born 27 Dec 1896 in Travis, Texas, and died 24 Apr 1972 in Taylor, Texas. He married Mattie Frances EDMONDS 10 Jun 1925 in Haskell, Texas. She was born 22 Apr 1903 in Jones, Texas, and died 03 Apr 1985 in Ector, Texas.

Child of William PALM and Mattie EDMONDS is:

Billie Frances<sup>5</sup> PALM.

## Surname Index

### A

Anders.....	74
Anderson .....	53, 78
Andersson .....	77
Atwood .....	65, 85

### B

Bass.....	70
Benagh.....	72
Bickler .....	70, 71
Biffel.....	74
Birch.....	75
Blackburn.....	70
Bowers .....	70
Boyce .....	84
Boyd.....	70, 77
Brice.....	83
Bridges.....	70
Brown .....	70
Burditt.....	81

### C

Carter .....	73
Copeland.....	70
Craig.....	66, 70, 71
Curtis.....	64

### D

Dannelly.....	70
Day.....	75
Dennis.....	84
Dickie .....	70
Dobbs.....	75
Dobie .....	74
Dunlap .....	82

### E

Edmonds.....	85
Emeigh .....	63, 64, 65, 66, 67
Eppright .....	77
Epps .....	65

### F

Fleming .....	66
---------------	----

Fletcher.....	67
Foster.....	72
Frölich .....	76

### G

Gault .....	66
Gensen.....	64
Gilger .....	65
Gok.....	82
Gorsuch.....	73
Gossett.....	75

### H

Hansen .....	70
Hargis.....	73, 74
Harris .....	70, 74, 81
Hawley .....	73
Hayden.....	65
Heinsohn.....	75
Hester .....	83
Hewitt .....	74
Hopkins.....	75, 80
Hornsby .....	81
Hyde.....	72

### I

Irwin.....	75
Isaacks.....	72

### J

Johnson.....	70, 72, 78
Jonsdotter.....	77

### K

Keith.....	71
Knox .....	71

### L

Landin .....	81
Lane .....	84
Langston .....	71
Lewis.....	73
Looney .....	70
Lundell .....	78
Lundgren.....	78

Lungskwitz.....70

**M**

Madison.....83

Mangum.....81

Maverick.....75

Mayfield.....80

McAllster.....70

McBride.....63, 64

McChristian.....74

McConnell.....70

McCuiston.....74

McFatter.....84

Moncrief.....75

Morrison.....81

Muir.....74

Murchison.....83

**N**

Neely.....85

Newton.....70

Nilsdotter.....82

**O**

Oliphant.....73, 75

Orten.....65

**P**

Palm.....85

Peterson.....77

Pettersdotter.....77

Petterson.....77

Pittenger.....70

Puckett.....81

**R**

Ransom.....75

Reed.....73

Robertson.....73

Rountree.....80

**S**

Scott.....63

Sellstrom.....78

Shelby.....72

Sherman.....67

Shirk.....64

Sjoberg.....77

Smiley.....75

Smith.....84

Sponberg.....77, 78, 82

Stone.....66

Strain.....83

Striegler.....80

Stromberg.....78, 82

Swenson.....70, 71, 78

**V**

Van Zile.....73

Vandiver.....74

Von Briesen.....70

von Rosenberg.....73, 74, 76

**W**

Wallace.....75

Watson.....75

Webb.....74, 75

Williams.....85

Wright.....72

**Y**

Yarborough.....74